

The logo consists of two horizontal, parallel grey bars of equal length, stacked vertically.

SoftBank

Notice

Any information presented herein (including materials prepared, the contents of any discussions) is for illustrative purposes only and should not be construed as a recommendation of any investment or security. This presentation and the views expressed herein are those of the presenter and do not necessarily reflect the views of SoftBank Investment Advisers, SoftBank or any other member of these organizations. The information presented herein is not intended to be an advertisement for the advisory services of SBIA, or marketing of an investment in a fund managed by SBIA. Anyone who views this presentation acknowledges that this is not a solicitation.

Legal Disclaimers for SoftBank Presentation

This presentation (this “**Presentation**”) is furnished to you for informational purposes and is not, and may not be relied on in any manner as, legal, tax, investment, accounting or other advice or as an offer to sell or a solicitation of an offer to buy limited partnership or comparable limited liability equity interests in SoftBank Vision Fund L.P. (together with, as the context may require, any parallel fund, feeder fund, co-investment vehicle or alternative investment vehicle, the “**Fund**” or “**SVF**”). This Presentation is not intended to be relied upon as the basis for any investment decision and is not, and should not be assumed to be, complete. The contents of this presentation are not to be construed as legal, business or tax advice.

None of the Fund, the manager of the Fund (the “**Manager**”), SoftBank Group Corp. (together with its affiliates, “**SoftBank**”) or their respective affiliates makes any representation or warranty, express or implied, as to the accuracy or completeness of the information contained herein and nothing contained herein should be relied upon as a promise or representation as to past or future performance of the Fund or any other entity referenced in this Presentation.

Recipients of this Presentation should make their own investigations and evaluations of the information contained in this Presentation and should note that such information may change materially.

No representation is made that the Fund’s investments will be comparable to the selected SoftBank investments set forth herein, or any other SoftBank investments, in performance, portfolio composition or level of risk. Information about past SoftBank investments is provided solely to illustrate SoftBank’s experience in making investments that it believes have one or more, but not necessary all, of the characteristics of investments that the Manager intends to pursue on behalf of the Fund.

References to any specific investments of the Fund, to the extent included herein, are presented to illustrate the Manager’s investment process and operating philosophy only and should not be construed as a recommendation of any particular investment or security. The investment performance of individual investments in the Fund may vary and the performance of the selected transactions is not necessarily indicative of the performance of all of the applicable prior investments. The specific investments identified and described herein do not represent all of the investments made by the Manager, and no assumption should be made that investments identified and discussed herein were or will be profitable.

Statements contained in this Presentation (including those relating to current and future market conditions and trends in respect thereof) that are not historical facts are based on current expectations, estimates, projections, opinions and/or beliefs of the Manager. Such statements involve known and unknown risks, uncertainties and other factors, and undue reliance should not be placed thereon. In addition, no representation or warranty is made with respect to the reasonableness of any estimates, forecasts, illustrations, prospects or returns, which should be regarded as illustrative only, or that any profits will be realized. Certain information contained herein constitutes “forward-looking statements,” which can be identified by the use of terms such as “may”, “will”, “should”, “expect”, “project”, “estimate”, “intend”, “continue”, “target” or “believe” (or the negatives thereof) or other variations thereon or comparable terminology. Due to various risks and uncertainties, actual events or results or actual performance of the Fund (or any other entity referred to herein) may differ materially from those reflected or contemplated in such forward-looking statements. As a result, investors should not rely on such forward-looking statements in making their investment decisions. No representation or warranty is made as to future performance or such forward-looking statements. None of the information contained herein has been filed with the U.S. Securities and Exchange Commission, any securities administrator under any securities laws of any U.S. or non-U.S. jurisdiction or any other U.S. or non-U.S. governmental or self-regulatory authority. No such governmental or self-regulatory authority will pass on the merits of the offering of interests in the Fund or the adequacy of the information contained herein. Any representation to the contrary is unlawful.

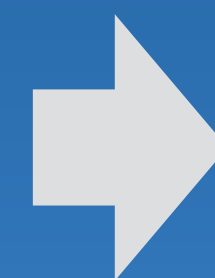
Past performance is not necessarily indicative of future results. Investors may lose investment capital. There can be no assurance that the Fund will achieve comparable results or the Fund will be able to implement its investment strategy or achieve its investment objectives.

To the extent presented herein, information relating to industry sectors and sizes has been determined by the Manager based on internal research and data. Although the Manager believes that such determinations are reasonable, they are inherently subjective in nature. Other market participants may make different determinations relating to sector characterization and size based on the same underlying data. Certain information contained in this Presentation has been obtained from published and non-published sources prepared by other parties, which in certain cases have not been updated through the date hereof. While such information is believed to be reliable for the purposes of this Presentation, none of the Fund, the Manager, SoftBank, or their respective affiliates assumes any responsibility for the accuracy or completeness of such information and such information has not been independently verified. Except where otherwise indicated herein, the information provided in this Presentation is based on matters as they exist as of the date of preparation of this Presentation and not as of any future date, and will not be updated or otherwise revised to reflect information that subsequently becomes available, or circumstances existing or changes occurring after the date hereof. In this Presentation, references to “\$” or “US\$” shall be to the lawful currency of the United States.

Third-party logos included herein are provided for illustrative purposes only. Inclusion of such logos does not imply endorsement by such firms or businesses. There is no guarantee that the Manager or its portfolio companies will work with any of the firms or businesses whose logos are included herein in the future.

EACH RECIPIENT ACKNOWLEDGES AND AGREES THAT IT IS RECEIVING THIS PRESENTATION ONLY FOR THE PURPOSES STATED ABOVE AND SUBJECT TO ALL APPLICABLE CONFIDENTIALITY OBLIGATIONS AS WELL AS THE UNITED STATES SECURITIES LAWS PROHIBITING ANY PERSON WHO HAS RECEIVED MATERIAL, NON-PUBLIC INFORMATION FROM PURCHASING OR SELLING SECURITIES OF THE APPLICABLE ISSUER OR FROM COMMUNICATING SUCH INFORMATION TO ANY OTHER PERSON UNDER CIRCUMSTANCES IN WHICH IT IS REASONABLY FORESEEABLE THAT SUCH PERSON IS LIKELY TO PURCHASE OR SELL SUCH SECURITIES.

Mobility

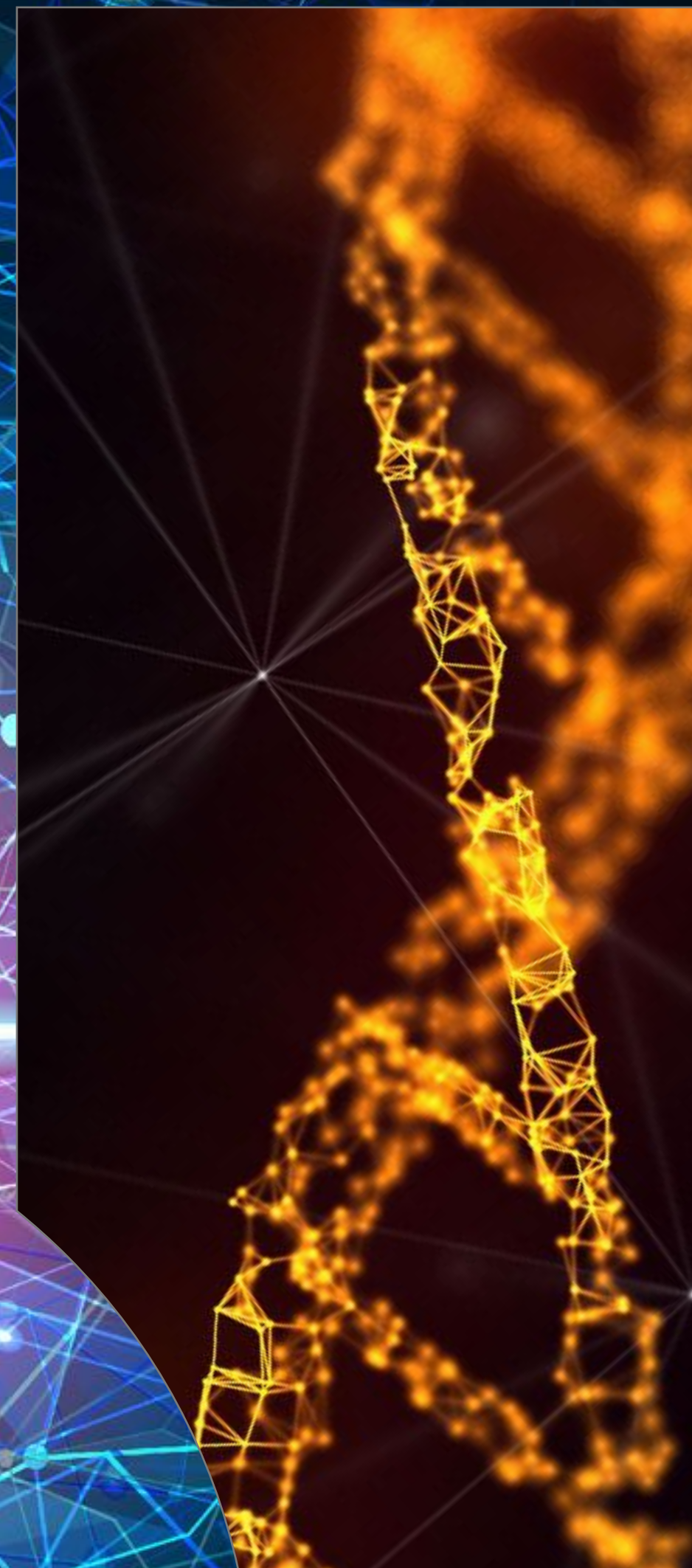


人類は移動することで進化してきた



AI

人類史上最大の革命



AI

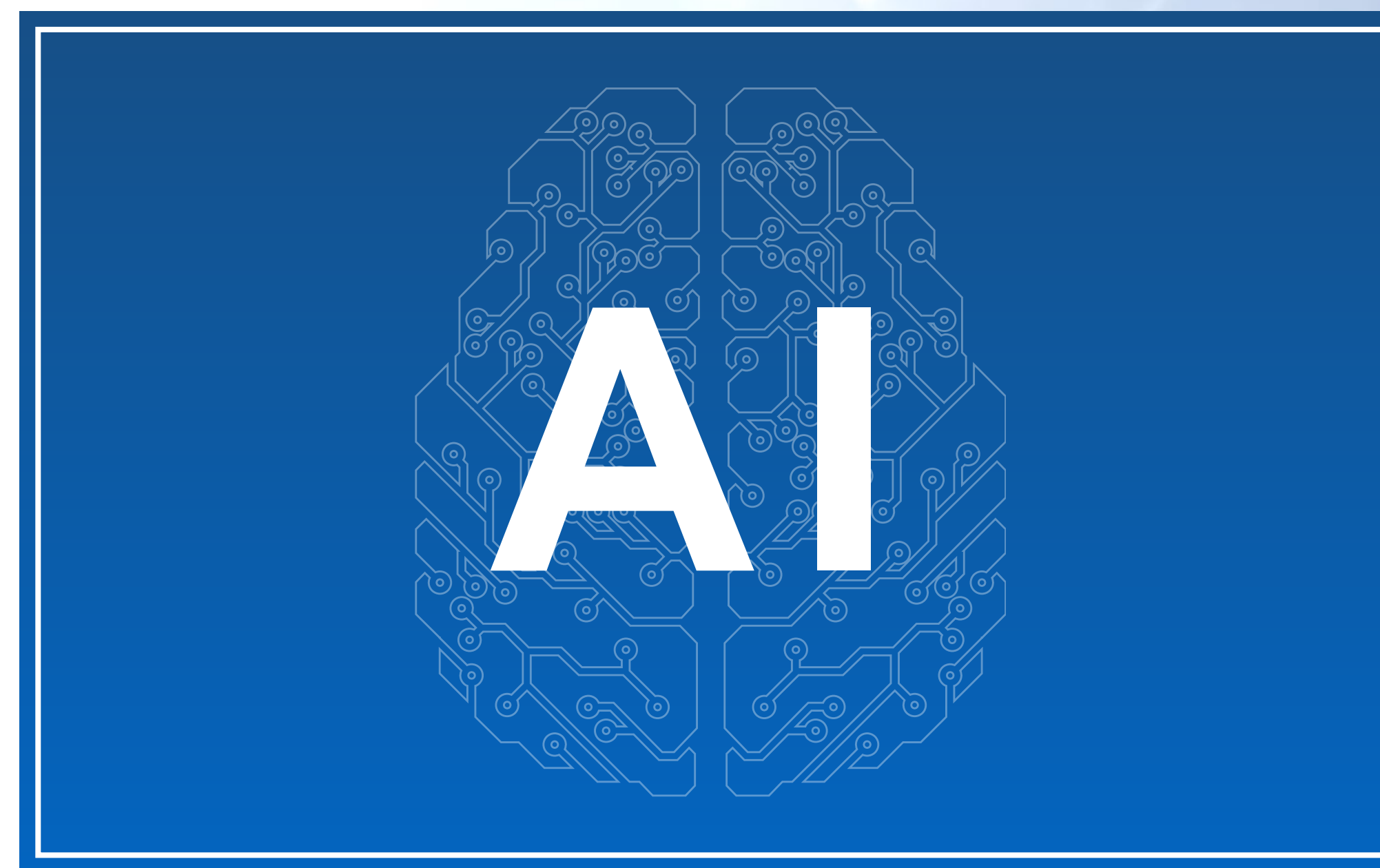
すべての産業が再定義される

TOYOTA

＝ SoftBank



+



モビリティ AI革命を牽引

ライドシェア

物流

自動運転

画像認識・処理

ライドシェア
ポートフォリオ
(SBG)

 满帮
(Full Truck Alliance)
SVF 投資

 CRUISE
SBG 投資

 NVIDIA
light
 nauto
SVF 投資

EC

 AUTO1.com
SVF 投資

SoftBank

マップ

 mapbox
SVF 投資

リース / レンタル

IoT / セキュリティ

 arm
SBG & SVF 投資

 众安保险
ZhongAn Insurance
policybazaar.com
Compare. Buy. Save.
SVF 投資

保険

 fair
 Getaround
SBG 投資

モビリティ AI 群戦略

ライドシェア



UBER^{*1}

DiDi^{*2}

OLA^{*3}

Grab^{*3}

グローバルライドシェアポートフォリオ

*1 SBG子会社がUber株式を保有。将来的にSVFへ紹介する可能性あり。

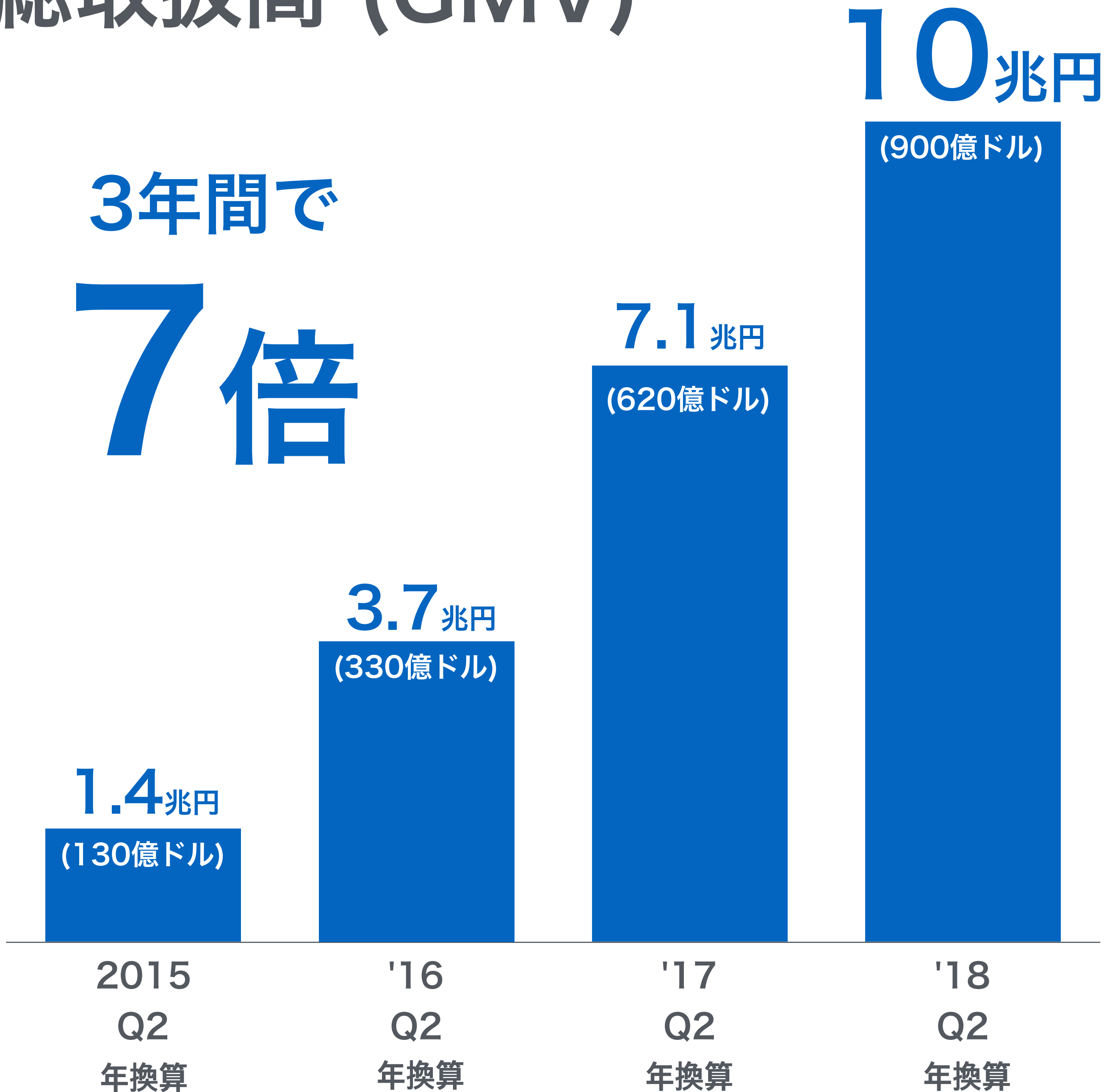
*2 DiDiはSB Delta Fund (Jersey) L.P.およびSoftBank Vision FundではないSBG子会社からの投資です。

*3 Ola、Grabはソフトバンクグループ株式会社およびその関連会社からの投資

総取扱高 (GMV)

3年間で

7倍



UBER

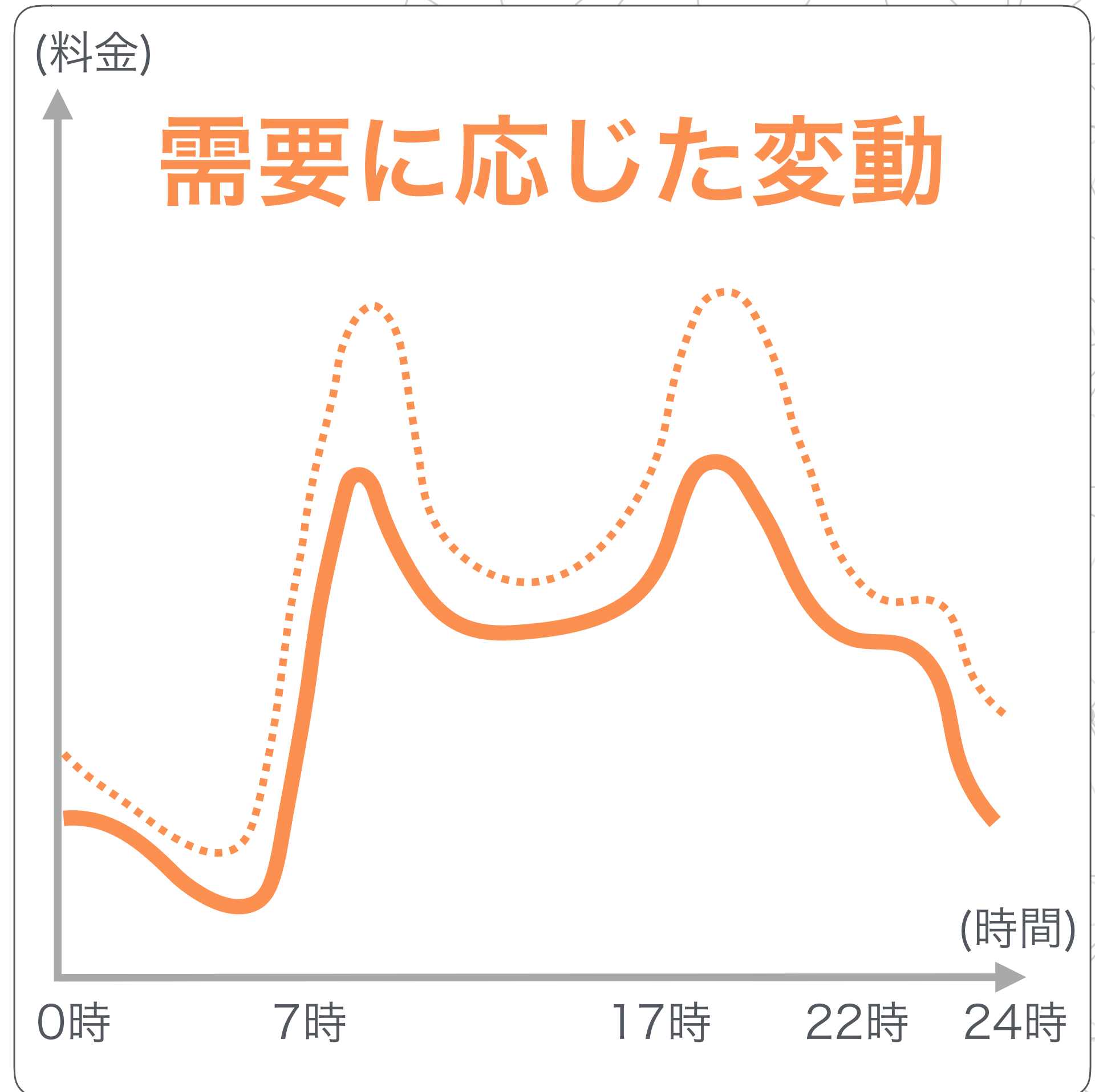
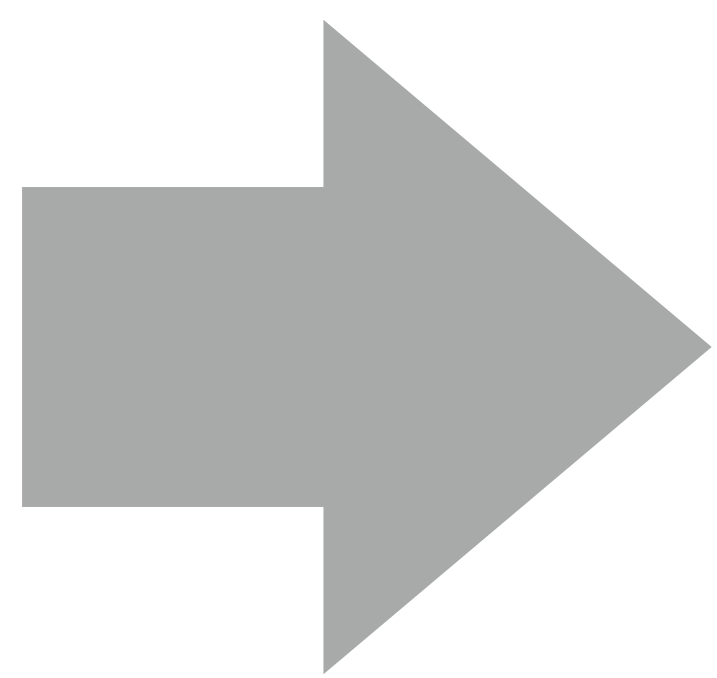
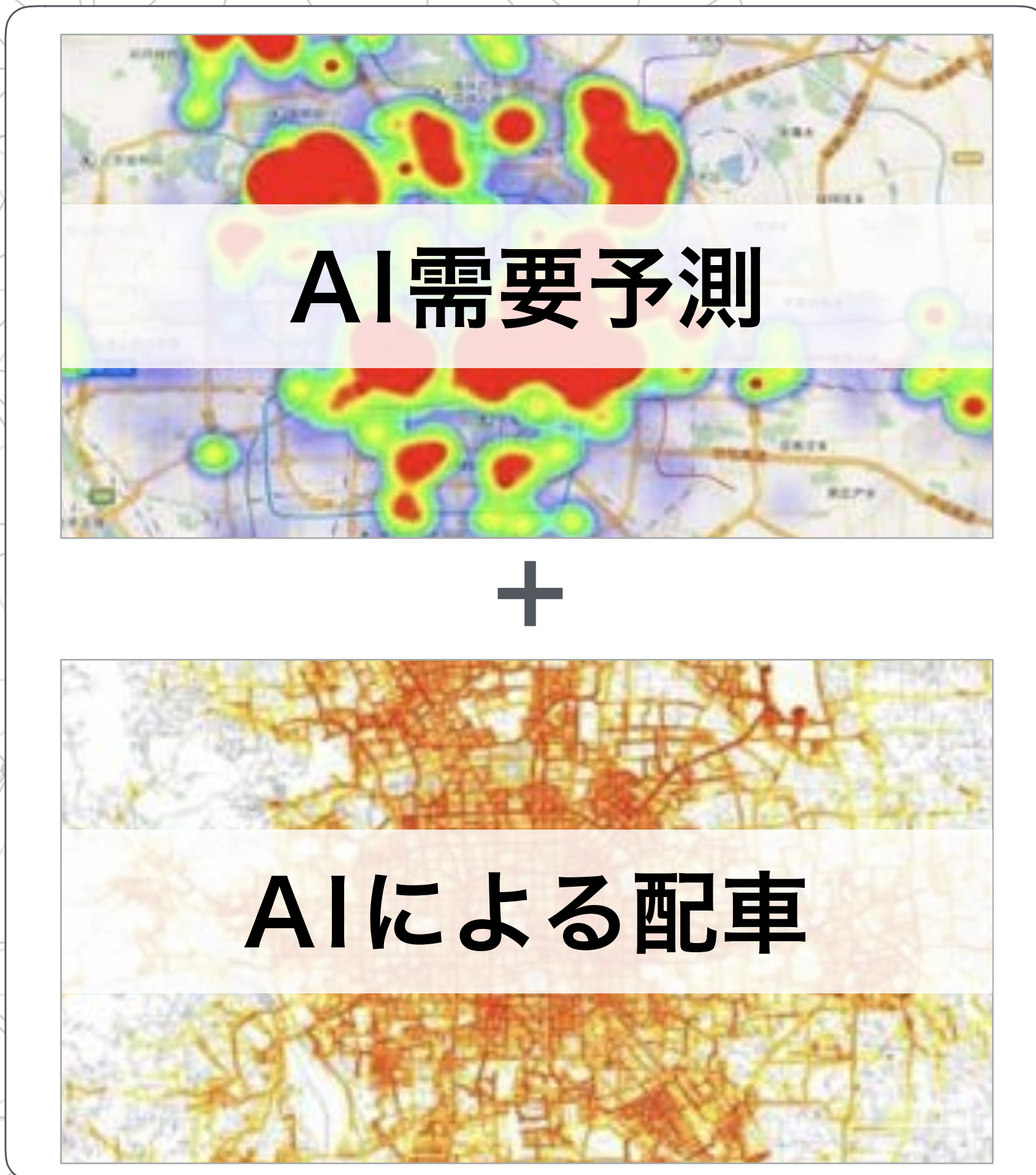
DiDi

Grab

OLA

※1ドル=113.28円で換算

(出所) Uber, DiDi, Grab, Ola 12



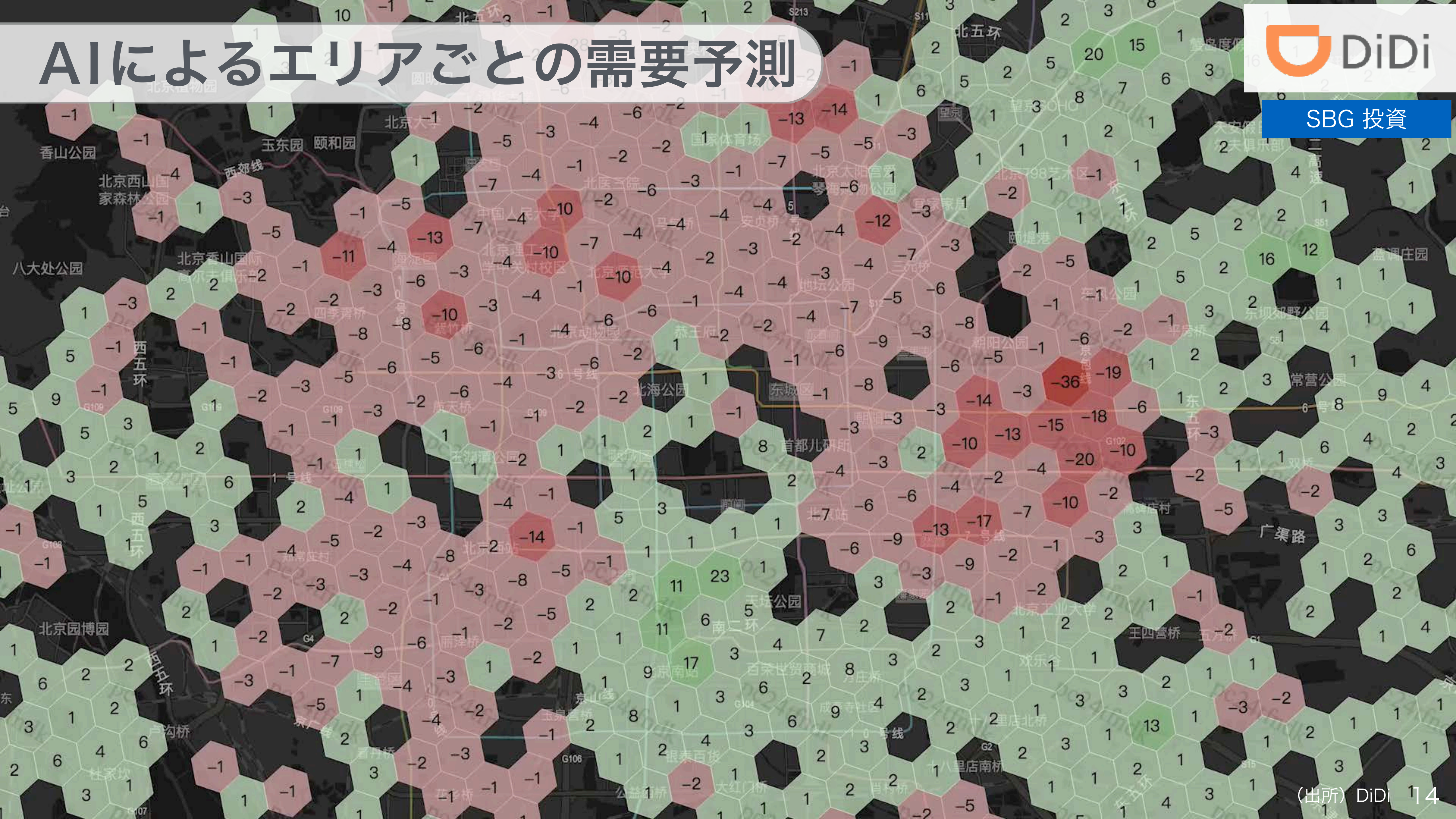
配車アルゴリズム

ダイナミックプライシング

AIによるエリアごとの需要予測



SBG 投資



ロジステイクス

マーケットシェア (中国)

No.1



*1 ユーザー数ベース (2018年8月時点)

*2 同社のサービスに月に1回以上ログインしたトラック運転手の数

自動運転

125万人

交通事故死 (世界/年間)

125万人

交通事故死を
無くしたい

cruise

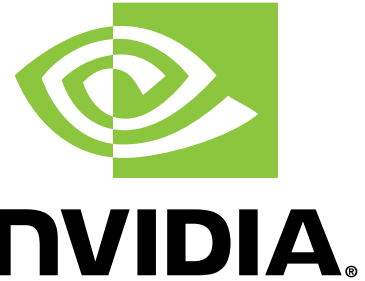


道路工事区域での実証実験



画像認識 / 処理

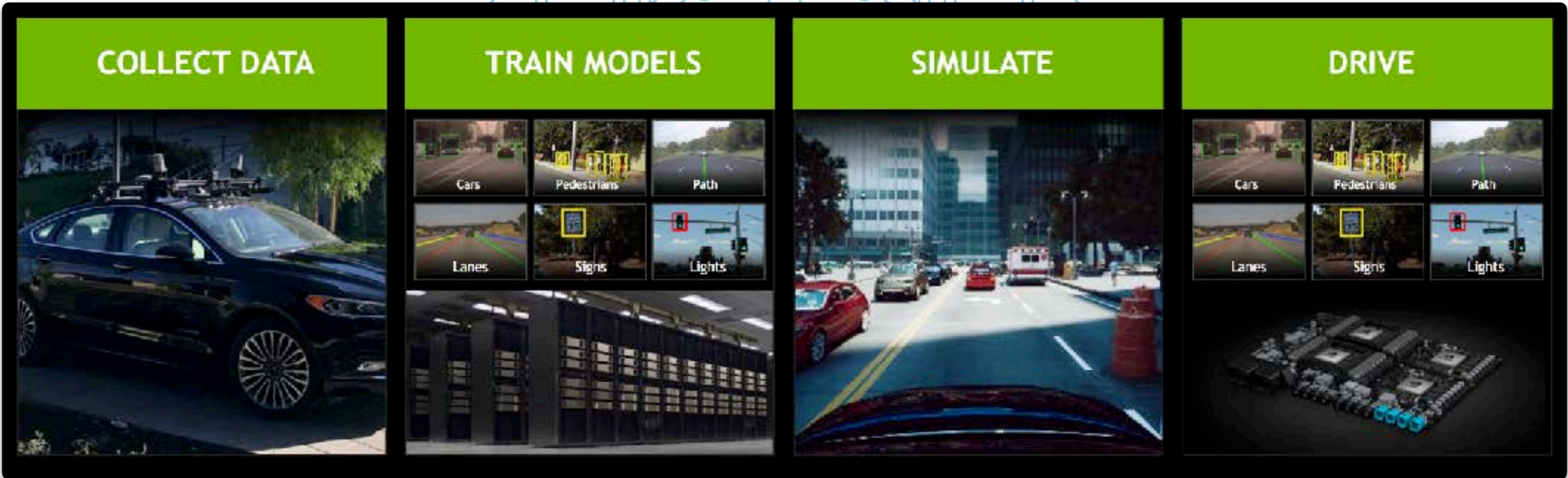
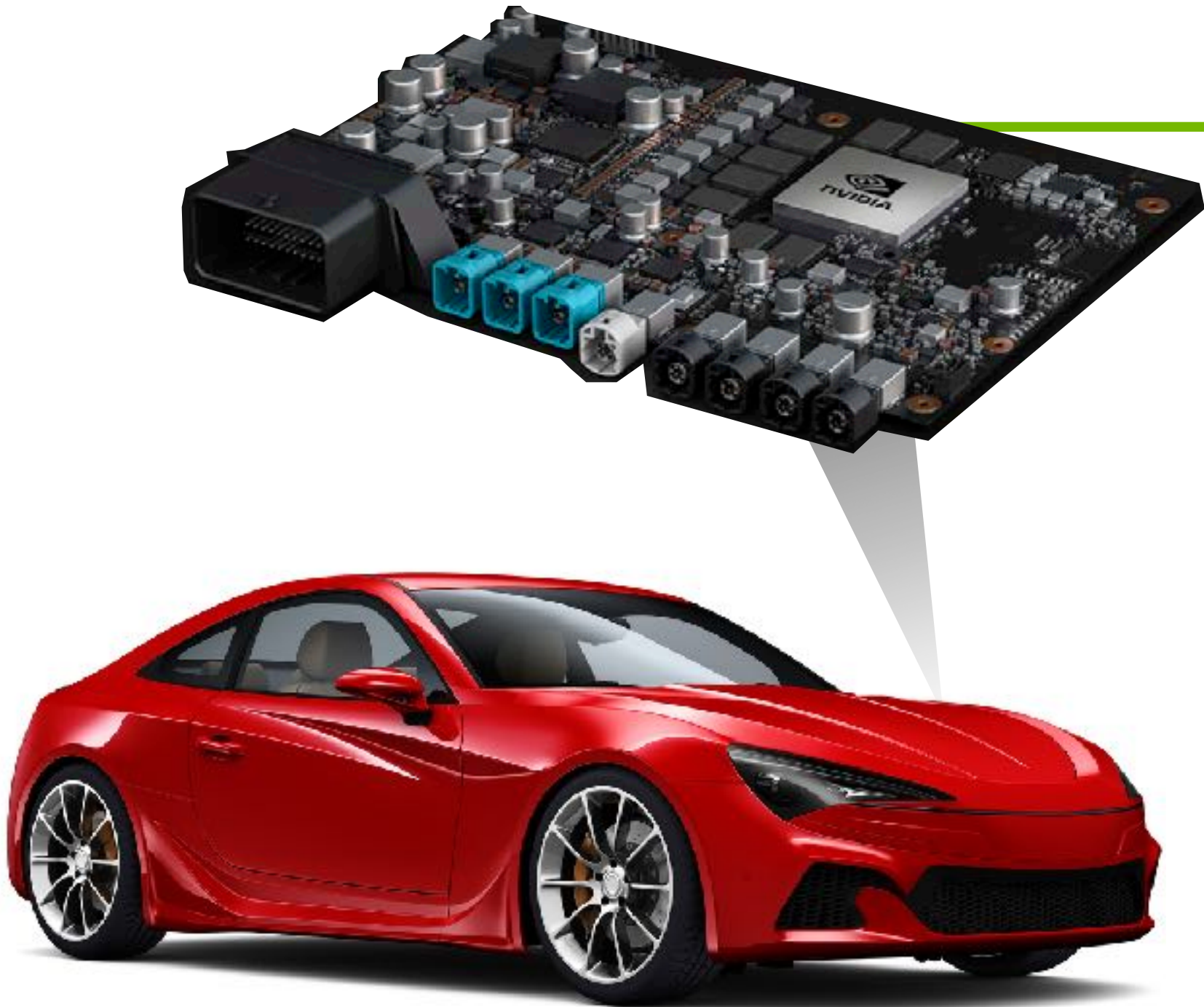
自動運転AIプラットフォーム



SVF 投資

Xavier
世界初の車載AIチップ

AIプラットフォーム



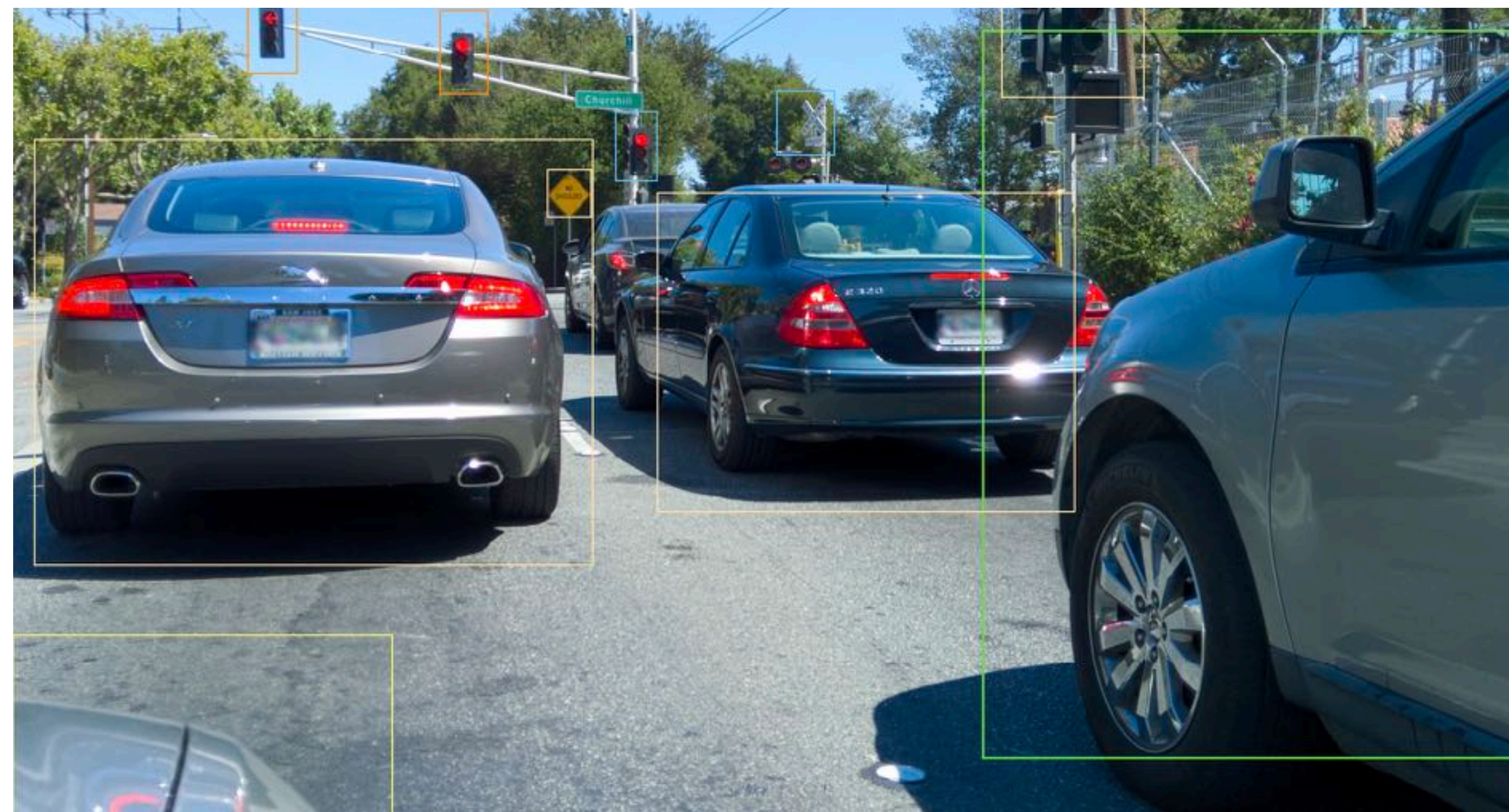
自動運転

AIを活用した3D空間認識

Lightカメラ



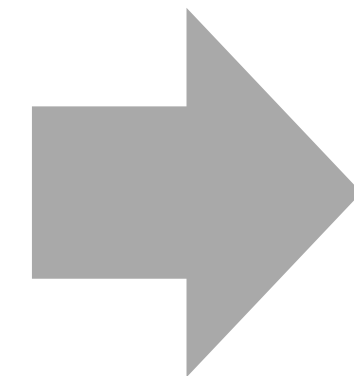
インテリジェント
アルゴリズム



空間認識能力が向上

AIによる運行管理サービス

小型カメラ



車外モニタ



車内モニタ



運転手の注意散漫 最大70%減

IoT/セキュリティ

車載チップ設計

1996年～

車載情報機器*

シェア 85%超

先進運転支援システム*

シェア 65%超

- パワートレイン
- ボディ
- 車載情報機器 / コックピット
- 先進運転支援システム / 自動運転
- コネクティビティ

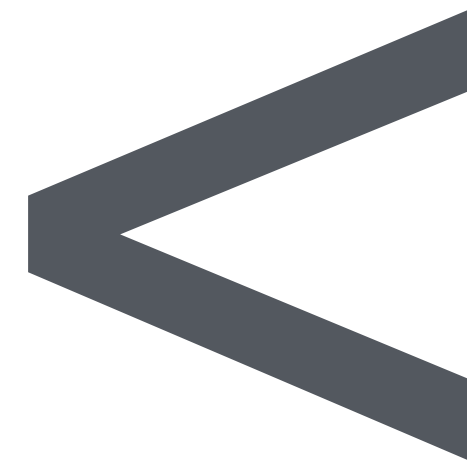
プログラムコード数

ボーイング787



1,400万行

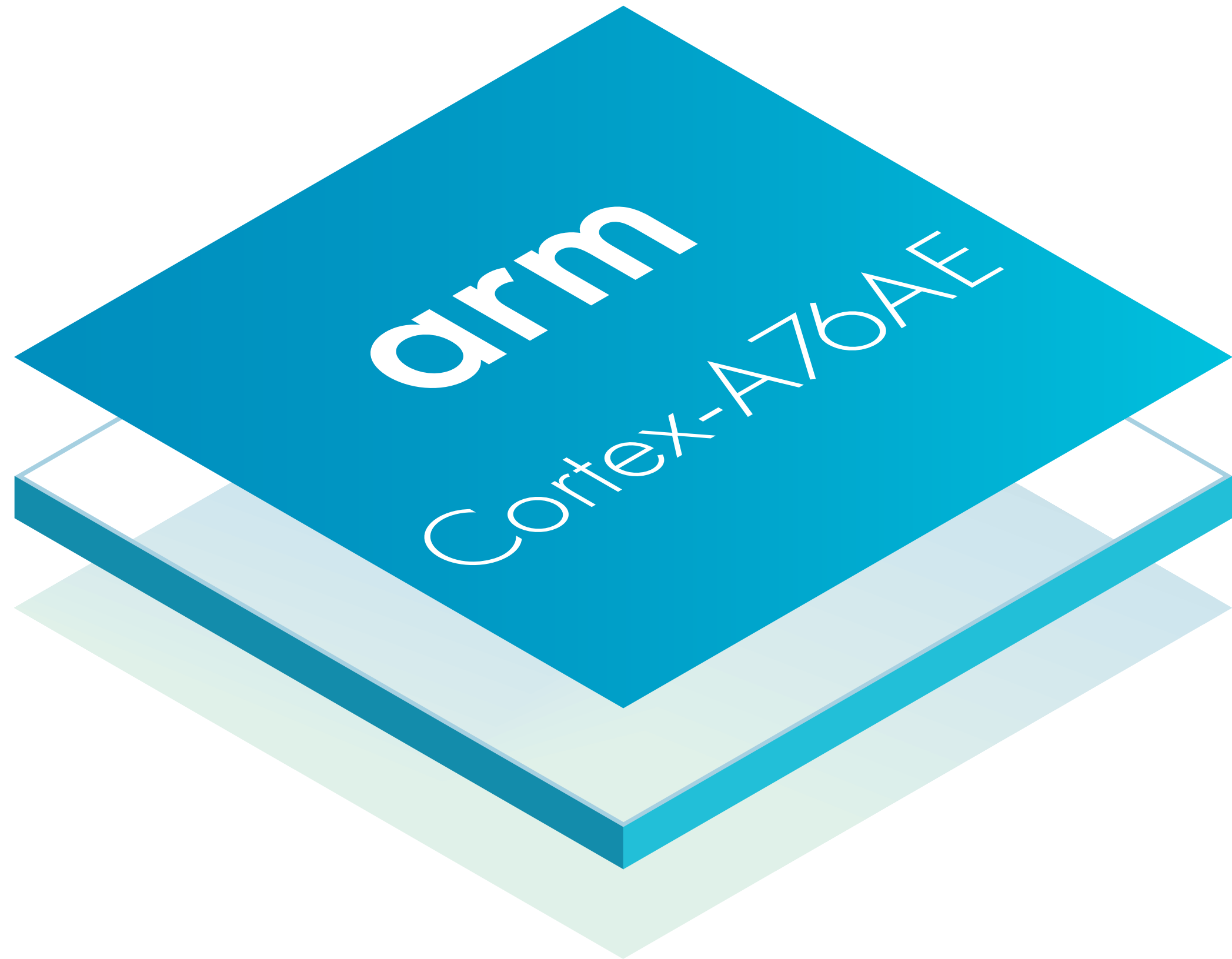
70倍



レベル5 自動運転車



10億行



自動車向け高性能プロセッサ

最高評価の機能安全性

最高水準の電力効率

世界初の自動運転対応プロセッサを発表

arm TRUSTZONE



trusted ソフトウェア			
trusted ハードウェア			
真性乱数	暗号セル	安全なメモリ	安全な周辺機器



セキュアな自動運転環境を提供

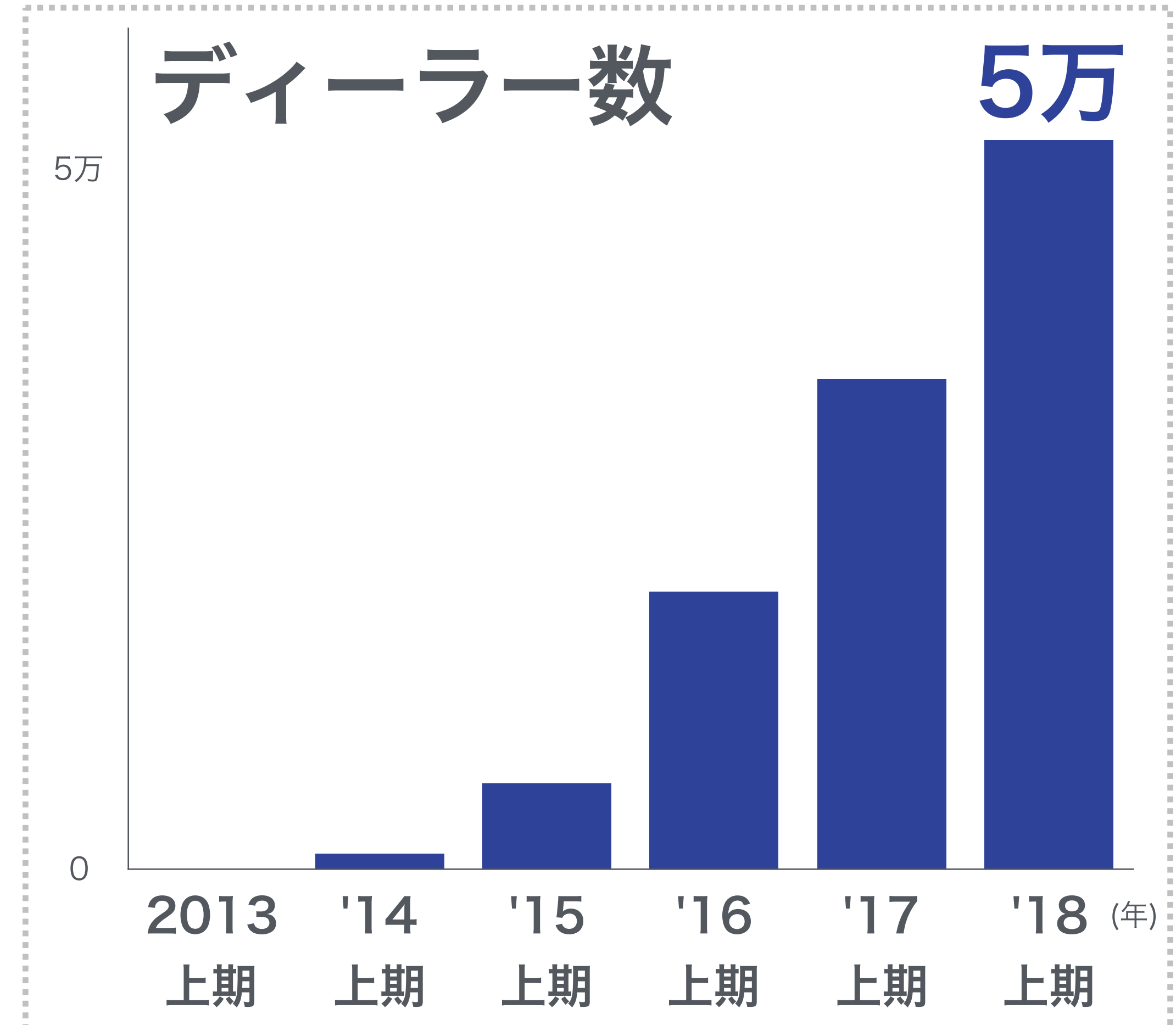
マッチング



リアルタイムデータ → AI → ライブロケーション

コマース

欧州No.1 中古車マーケットプレイス



リリース/レンタル

Getaround



オーナー



未利用時に
貸し出し

時間単位で
レンタル

保険提供



ユーザー

個人間カーシェアプラットフォーム

fair

ディーラー
OEMメーカー
卸売

調達



柔軟な
貸出期間

アプリで
手続き完結

貸出

Uber
ドライバー等

契約期間非固定のカーリースサービス

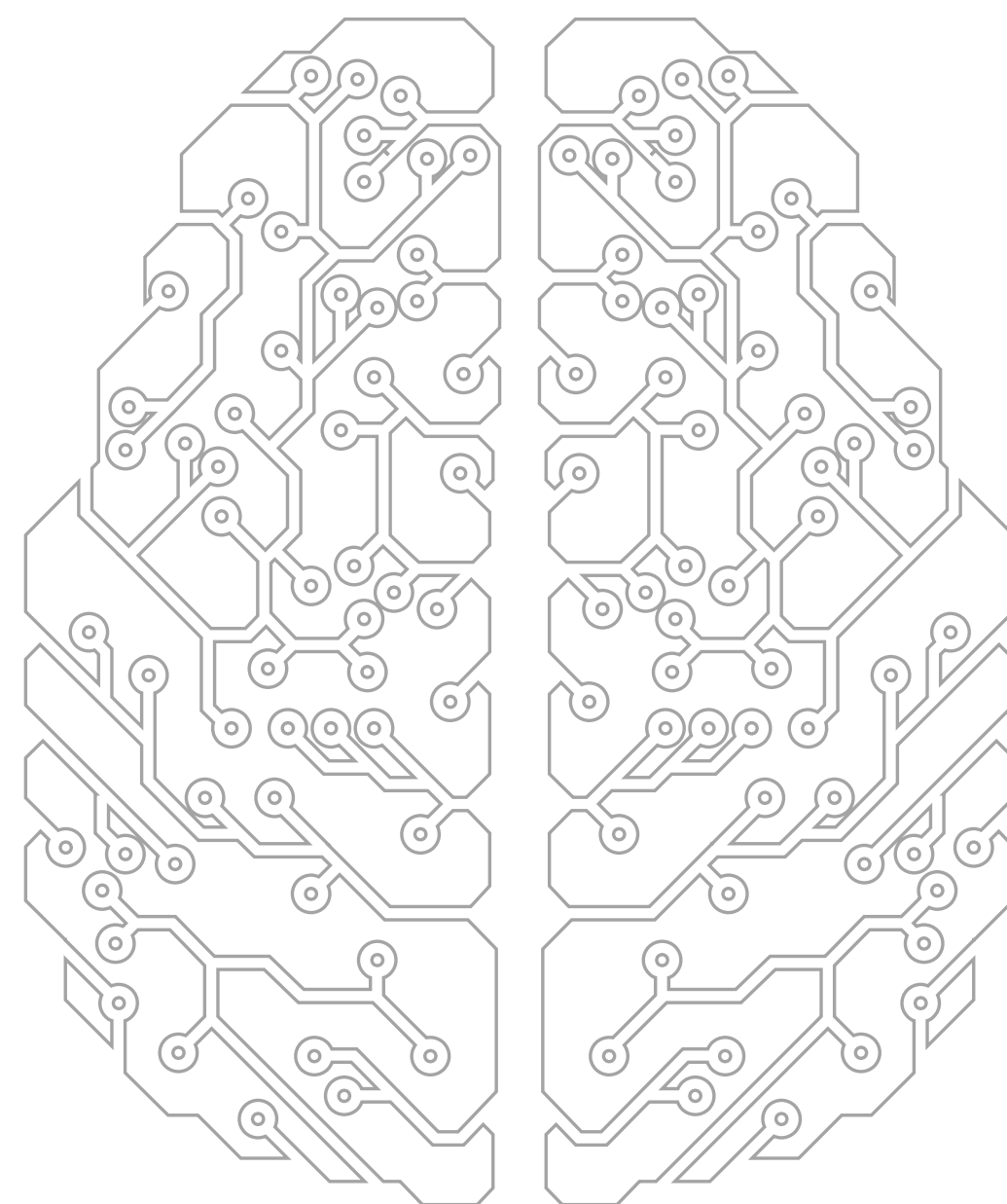
自動車保険

众安保險

ZhongAn Insurance

累計契約者数

5.4億人^{*1}



累計保險契約数

152億件^{*2}

保險契約にAIを活用

*1 2017年3月末時点 *2 2018年6月末時点



保険会社

AI

ビッグデータ

チャットボット

モバイルアプリ



顧客

インド最大のデジタル保険マーケットプレイス

ライドシェア

物流

自動運転

画像認識・処理

ライドシェア
ポートフォリオ
(SBG)



EC



SoftBank

マップ



リース / レンタル

IoT / セキュリティ



保険



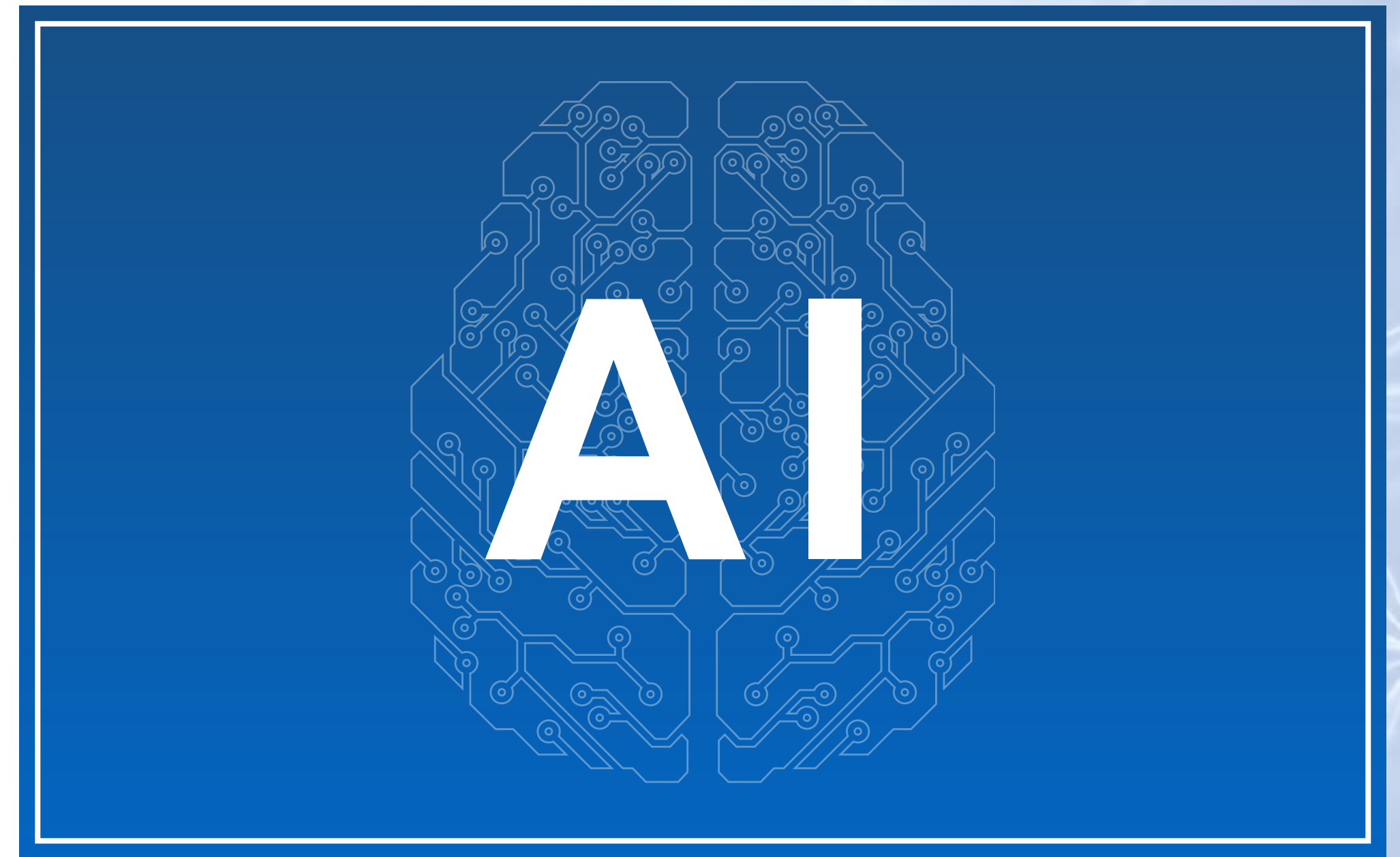
モビリティ AI 群戦略

TOYOTA

＝ SoftBank



+



モビリティ AI革命を牽引

The logo consists of two horizontal, parallel bars of equal length, stacked vertically. They are a light gray color with a subtle gradient, appearing slightly darker on the left side and lighter on the right side.

SoftBank